

**WKS**®

**MULTIPLE SPECIFICATIONS,  
MULTIPLE DESIGNS  
AND MULTIPLE FINISHES  
IN A SINGLE DOOR.**



## EXPERIENCE AND QUALITY

WKS is a company with more than 20 years of experience in the door industry, we satisfy the design and engineering needs in the most demanding markets with doors and architectural frames, complying with American and European standards and norms.

At WKS we believe that a door is more than just a door; and we are more than just a manufacturer. We believe that the quality of our products and the service that our team offers, guarantees the complete satisfaction of our clients.

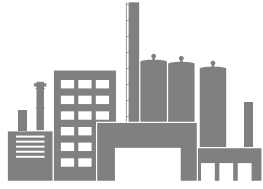


At WKS Door Systems, we have International certifications that have allowed us to have a worldwide reach, we have carried out projects in South America, Central and North America, focusing on markets with high quality standards and high specifications.

Our location in Mexico, just a few hours from an international sea port and 2 hours from the US border makes us especially competitive in these two markets.

**WE HAVE PROJECTS  
ALL OVER THE WORLD**

# OUR PRODUCTION



Quality  
Management  
Processes

Daily  
manufacturing  
of doors



## Machines

-  German
-  Spanish
-  Italian



Costs  
reduction

High Technology  
in manufacturing lines

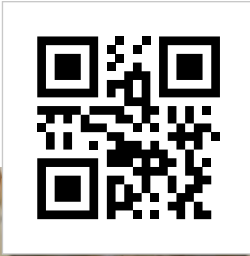


# MANAGEMENT SYSTEM

At WKS we have a monitoring system for each door, from the beginning of the process to the delivery to our client. This is done using labels with a QR code that allow us to know in detail the specifications of each door.

Each door is unique and has different sizes, machining's, finishes, etc., which makes it a highly specialized task to be able to manufacture each one of them. This is why our system helps our production teams in each station to recognize the variables that are present and what process will be carried out in each door.

There is a code reader in each production station which allows a "traceability" of each door that help us achieve accurate planning and programming schedules, resulting in a better service to our customers.





**“FOR US THERE ARE NO LIMITS  
IN CREATIVITY AND IMAGINATION”**



## CERTIFICATIONS

At WKS we manufacture certified products, which allows us to follow the most demanding processes by the most recognized international entities. Each door, its material and even its machining, has a process according to industry standards.

**We also offer the market the widest range of design certified doors.**

Our production capacity, our multiple certifications and specifications available, variety of designs and finishes, make us the perfect choice for the most demanding projects in the industry.

Being able to have the certification is as important as maintaining it, that is why we have constant audits throughout the year that allow us to be at the forefront of the new processes and formalities that are requested, as well as being able to confirm our commitment of safety to our clients.



DRAWING  
A NEW AGE



AMERICAN INTERTEK CERTIFICATION



Intertek



Intertek

The Intertek Laboratory is a globally recognized brand that maintains extensive global accreditations and recognition in testing and certification services. WKS has managed to maintain and grow in its fire certifications to take part in our client's projects.

The American fire certifications that WKS has with this laboratory are the following:

- **Flush wood door, available in:**  
Certification: 20, 45, 60 and 90 minutes fire rated  
Pressures: Neutral and positive Cat A & Cat B
- **Flat Panel door, available in:**  
Certification: 20, 45, 60 and 90 minutes fire rated  
Pressures: Positive Cat A & Cat B
- **Wooden frame, available in:**  
Certification: 20, 45, 60 and 90 minutes fire rated  
Pressures: Neutral and Positive Cat B



## EUROPEAN IFC CERTIFICATION



The European Fire Certification is granted through a laboratory in England called IFC International Fire Consultants, allowing us to offer our products in the entire European continent.

This derives from the need to be able to grant our clients the opportunity to participate and carry out projects from architects and brands from Europe. With this certification we have been able to strengthen our offer to be able to confirm our place as a global company.

The fire certifications that this laboratory has issued to us are the following:

- Flush wooden door for 30 minutes and 60 minutes.
- Solid wood frames 30 minutes and 60 minutes.



# CERTIFICATION FOR ACOUSTIC DOORS



Today an acoustic certification is one of the most sought after, the tranquility of an office, a hotel room or residence is essential, that is why we seek to give you the option of combining the design of your door with features that can add value to your project.

Sound tests are carried out by laboratories where, with special tools, the sound levels that manage to pass from one place to another are verified. With our product you can have a Fire rated door and give your clients an adequate rest.

Sound levels are based on decibels (dB) or transmission sound class (STC) that are used to measure the intensity of a sound. WKS currently holds the following sound certifications:

- 28 dB | 30 dB | 32 dB | 36 dB | 42 dB

The use of automatic door bottoms and adhesive gasketing on the frame are recommended for the best performance.

# SUSTAINABILITY CERTIFICATIONS



WKS has a long-term commitment to care for the environment, as a company we must quantify our environmental impacts and take actions to reduce them, that is why we want to be part of the projects that seek to protect the natural resources that we have today to ensure the quality of life of the following generations, as well as taking care of the health of the occupants in the buildings.

We have options available for this type of projects that allow our clients to reduce their environmental impact and at the same time enjoy other benefits when using our products.

Our certifications in sustainability are the following:



## LEED CREDITS

WKS doors contribute to LEED (*Leadership in Energy and Environmental Design*) credits created by the United States Green Building Council. We offer products that have the following certifications:



## FSC

The Forest Stewardship Council guarantees the renewability and sustainability of the world's forests. This certification demonstrates that the materials and products purchased, labeled and sold as certified to our customers, come from sustainable sources, that they are authentic and that any statement is true and correct.

**Ask about our FSC certified products.**



## EPD

WKS has an Environmental Product Declaration published in the International EPD System, which presents transparent, verified and comparable information on the environmental impact of the life cycle of doors, from the extraction of raw materials to the manufacturing process.

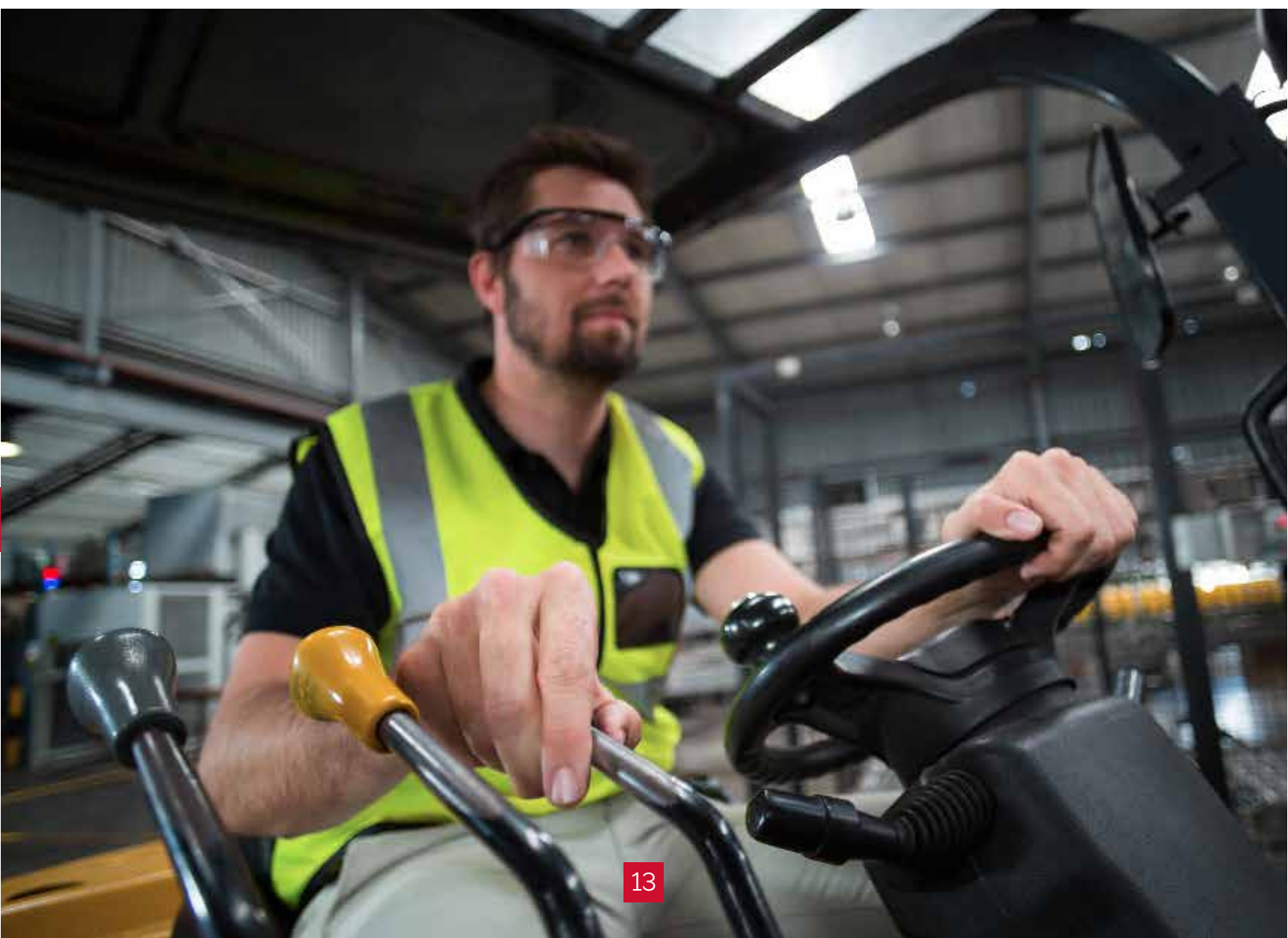
Being a highly specialized industry, WKS offers literature and continuous training on products, processes and systems for our clients.

To know the different variables and limitations of an opening configuration, it is important to always be updated on all of the information available.

The development of products and designs in the market is constant and that is why we keep our training programs updated and at the forefront of new market trends.

Factory tours, workshops, online courses, among other tools are offered to achieve a full understanding of our capabilities.

## CONTINUING EDUCATION



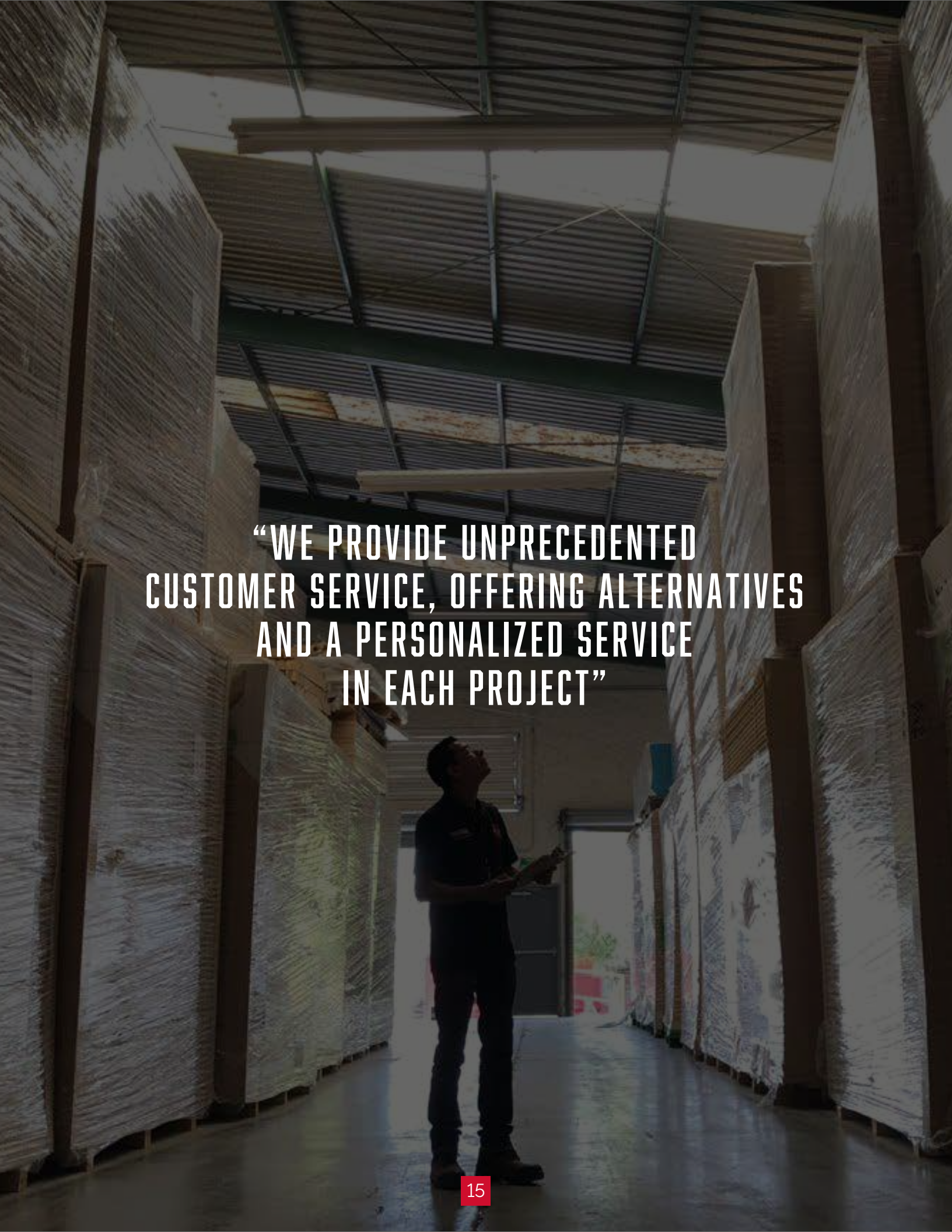


WKS has a Quote System that allows quick and accurate quotation of projects.

You can choose your door considering the established manufacturing and certification rules.

A username and password are granted having passed the necessary accreditations to be a certified WKS distributor.

## QUOTE SYSTEM

A person in a dark uniform stands in a large warehouse aisle, looking up at the high, corrugated metal ceiling. The aisle is lined with tall stacks of materials wrapped in white plastic. The lighting is dramatic, with strong highlights and deep shadows.

**“WE PROVIDE UNPRECEDENTED  
CUSTOMER SERVICE, OFFERING ALTERNATIVES  
AND A PERSONALIZED SERVICE  
IN EACH PROJECT”**



We are specialists in offering a complete experience in safe openings. WKS doors are built with various materials, one of the most important is the "core", which is made up of wood and mineral particles.

# CORE

Our range of Cores is made up of: Particleboard, Tubular, Structural Composite Lumber, Solid, Mineral, Acoustic and Agrifiber.



Particleboard



Tubular



Structural Composite Lumber



Solid



Mineral Core



Acoustic Board



Agrifiber



## ARCHITECTURAL SERIES

Our Premium line are the **Architectural Doors** that can be configured with different characteristics, from a fire resistant door to acoustic levels.



## COMMERCIAL SERIES

Using our Cores to maintain a highly engineered structure, WKS has created the line of commercial doors to provide an option to our clients looking for a value proposition.



## **SPECIAL DOORS**

At WKS we seek to give you a complete solution to your projects, which is why we undertake the task of innovating with new products.

- X-RAYS DOORS
- FLAT PANEL DOOR
- TRUE STILES & RAILS
- DOORS WITH RABBET
- WOODEN WALL PANELS
- FIBERGLASS DOORS
- DOORS WITH OVERDIMENSIONS



## FRAMES

At WKS we are experts in giving you a thorough solution, which is why we also manufacture wooden frames, which integrate the design of the entire opening (*door-frame*). **Available with Certification.**

We can also build pine frames veneered in the same species as the door.



Cased opening frame



Single rabbet frame



Double rabbet frame



Neutral Pressure



Positive pressure





**“WE HAVE THE WIDEST RANGE  
OF OPTIONS AVAILABLE TO CREATE  
A UNIQUE DESIGN”**

# FINISHES

Consistent and uniform colors on all your doors

Smooth and soft finishes for a surface free of imperfections

Extra level of protection on veneered doors

Color matching and customization availability

Painting is done in a controlled environment, causing less damage to the environment







# VENNERS

We specialize in offering a wide variety of veneer options. You can choose the species, cut, pairing, assembly, grain direction and add reveals to your design.

In general you can create a unique opening that will harmonize the chosen design of the project.

## STANDARD VENNERS



MAPLE



OAK



CHERRY



WALNUT

## COLOR OF VENNERS



HONEY



OCHRE



NUTMEG



TOBACCO



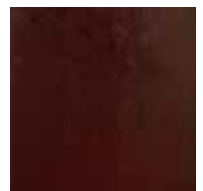
SAFFRON



CHERRY



BOURBON



CHOCOLATE

## NATURAL VENNERS



ALDER



BACOTE



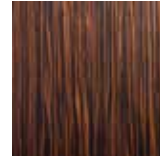
MAHOGANY



WHITE CEDAR



RED CEDAR



EBONY



SMOKED OAK



ASH TREE



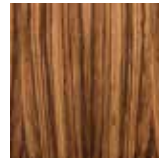
HICKORY



WHITE POPLAR



TZALAM



NATURAL ZEBRANO



SMOKED LARCH



SPRING



HAYA



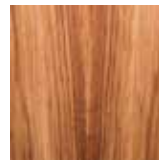
OKOUME



PAROTA



RED OAK



AFRICAN TZALAM



CEIBA



STAINED ASH

## PRE-COMPOSED SHEETS



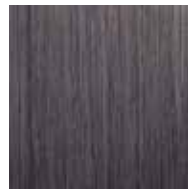
CEDAR



EBONY



OAK



GRATED GRAY



GRAINED GRAY



WALNUT



TEKA PC2



NOGAL PC1

## CUT

The beauty of veneer lies in the natural variations in texture, grain, shape, color, and the way it is assembled on the face of a door. The way a log is cut, relative to the annual growth rings, determines the appearance of the veneer. Veneer sheets will have natural variations in grain and pattern that are inherent to the species and cut.



## PAIRING

Veneer sheets can be paired creating a variety of styles that can be seen in the design of the door.



## BOOK MATCH

The most commonly used combination in the industry is when two pieces of veneer are opened and are like two adjacent pages in an open book. The veneer joints match and create a mirror image pattern at the joint line.

It is recommended Plain Sliced, Quarter Cut, and Rift Cut.



Plain Sliced



Quarter Cut



Rif Cut



### SLIP MATCH

Veneer sheets are placed in sequence without turning each piece over. The grain pattern is repeated, but the joints will not have a mirrored effect.

It is recommended to use Quarter Cut and Rift Cut.



### RANDOM MATCH

*(Mismatched)* A face containing veneer sheets of the same species that are selected and assembled regardless of color or grain, resulting in color and grain variations, contrasts, and patterns.

A pleasant appearance is not required.

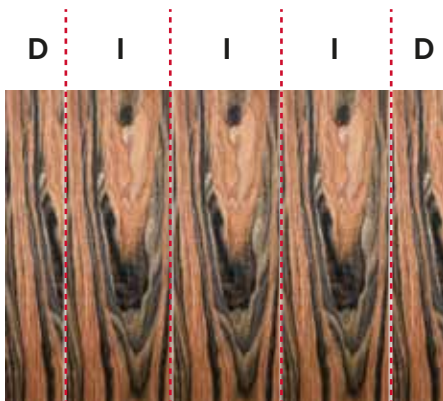


## ASSEMBLY

The chosen way of assembling the veneer flitches (strips) on the door helps to achieve patterns that balance the design. The type of assembly must be specified. If no specification is made, Running Match is the default option.

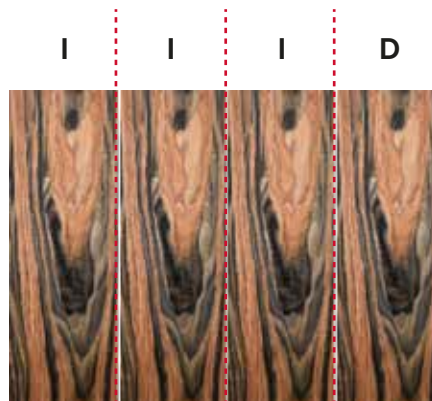


**D= DIFFERENT**  
**I= EQUAL**



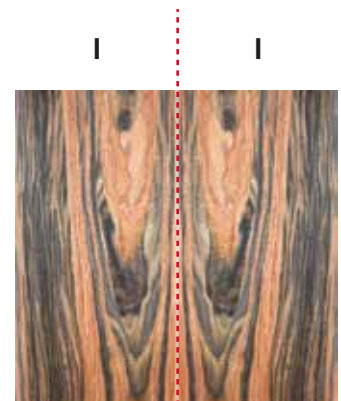
### RUNNING MATCH

The inner sheets will be the same width as each other, the outer sheets of the veneer will be of unequal width.



### BALANCE MATCH

Each face is assembled from sheets of uniform width before trimming.



### CENTER BALANCE MATCH

Each face is assembled from an even number of veneer sheets of uniform width before trimming.

## GRAIN DIRECTION

A unique design can be created on the door considering and choosing the direction of the grains, our combinations are: Vertical Grain, Horizontal Grain, Mixed Grain and Sketch Face.



**VERTICAL  
GRAIN**



**HORIZONTAL  
GRAIN**



**MIXED GRAIN**



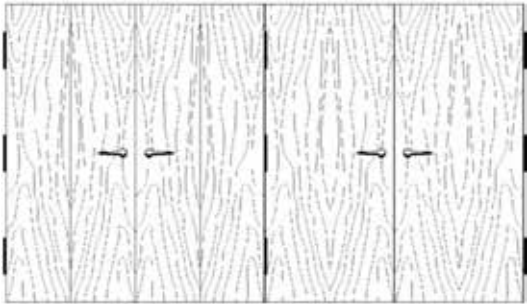
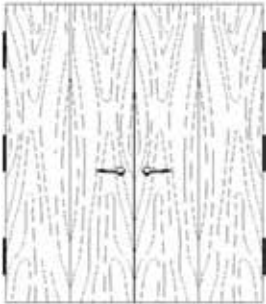
**SKETCH FACE**





**APPEARANCE OF THE DOORS  
PAIRS OR IN SETS**

When a specific transition is desired between doors or door sets within a space, it is important to specify the required sequence.



**REVEALS**

A reveal is the insertion of a line on the face of the door. Available in thicknesses of 1/8" wide and 1/16" deep.

You can choose in "V" shaped or "straight".

The inside of the line is painted in black or a similar color to match the color of the door.





## HPL

We have commercial partners of decorative laminates of the most recognized brands worldwide and leaders in the industry.

We can offer a wide range of colors, textures and designs to help conceptualize any project.





## PAINTING

Our UV paint line makes a differentiator in the projects in which we participate.

We have the standard colors in the industry, and if necessary, we can match any desired color.

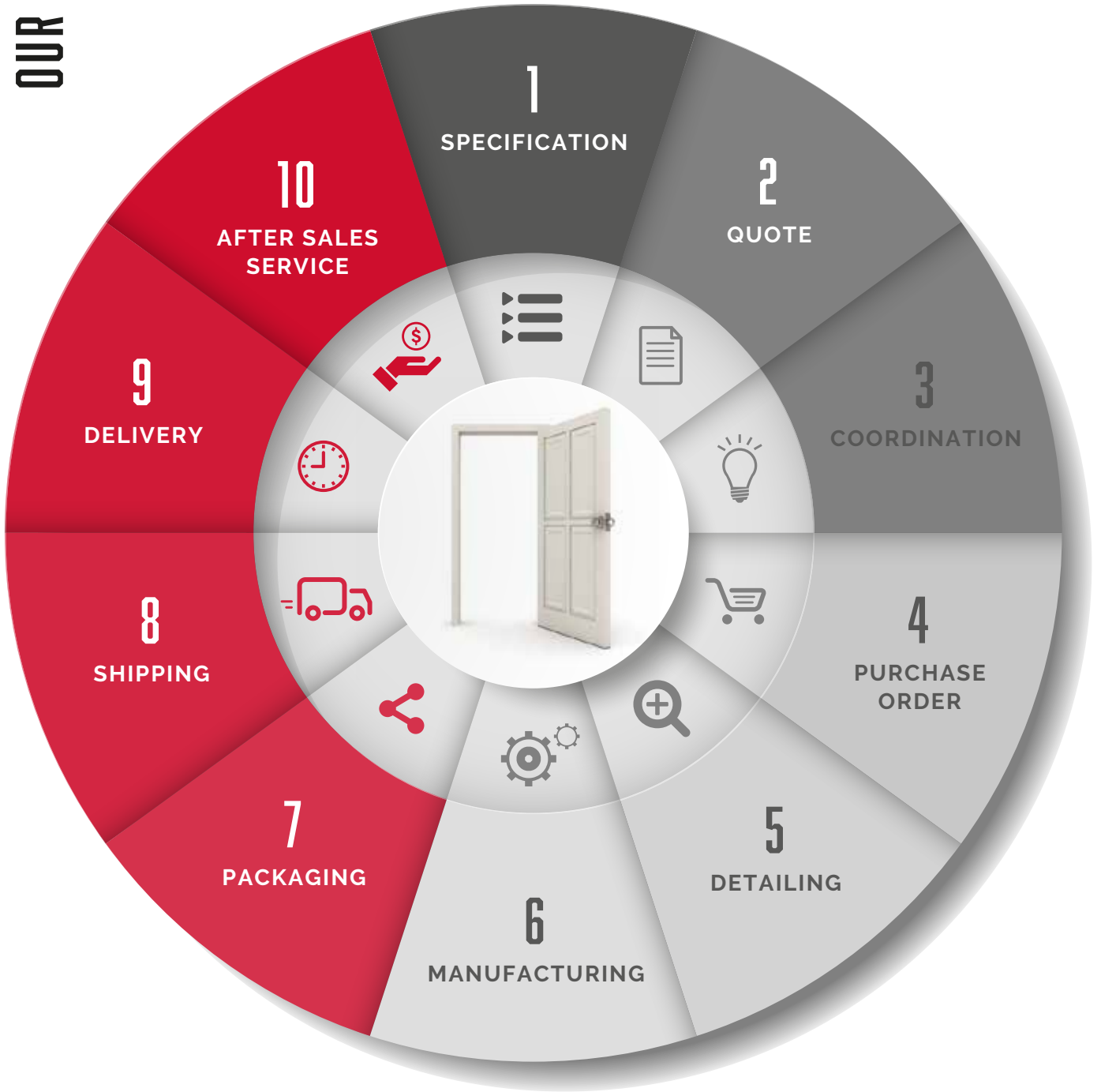
### Advantage

- The use of inks and UV technology helps us have more light stability in our doors, giving the color of the door a longer life cycle.
- The application of these UV products are low in VOC (*Volatile Organic Chemical*), that is, the product is free of gas emissions, the material is completely dry, which is why it falls into the category of LEED Doors.



**“WE ARE PROUD TO OFFER  
ADDITIONAL OPTIONS TO HELP  
OUR CUSTOMERS DELIVER  
A COMPLETE SOLUTION ON SITE”**

# OUR SOLUTION PROCESS



# SPECIAL SERVICES



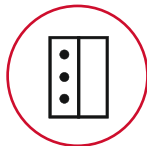
COORDINATION AND DETAILING



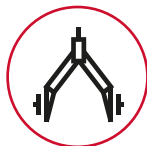
APPLICATION OF MOLDINGS FOR "VISION LITES"



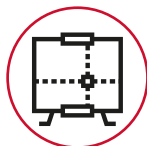
LOUVER FACTORY INSTALLATION



PRE-INSTALLATION OF HARDWARE



SPECIFICATION



LOGISTICS



MEASUREMENT TRIPS



SHIPMENTS BASED ON PHASES AND SPECIAL ACCOMMODATIONS

**“WE DELIVER UNIQUE PRODUCTS  
THAT MANAGE TO HIGHLIGHT AND  
DIFFERENTIATE YOUR PROJECT”**

# MARKETS



HOTELS



HOSPITALS AND CLINICS



CORPORATE



GOVERNMENT



RESIDENTIAL



EDUCATION



VERTICAL DEVELOPMENTS





# ARCHITECTURAL DOORS



MODEL SERIES	TUBULAR	PARTICLEBOARD	STRUCTURAL COMPOSITE LUMBER	AGRIFIBER	MINERAL	ACOUSTIC BOARD	SOLID
<b>SOUND RATING</b>	29-31 stc (31 Db)	30-32 stc (32 Db)	33 stc (33 Db)	33 stc (33 Db)	30-32 stc (32 Db)	42 stc (42 Db)	30-32 stc (32 Db)
<b>FIRE RATING</b>	20 min WHI	20 min WHI	20 min WHI	45 & 60 min WHI	45, 60 & 90 min WHI	20 min WHI	30 min CE (Euro)
<b>PRESSURE</b>	Neutral	Neutral, Cat A & Cat B Positive	Neutral, Cat A & Cat B Positive	Neutral, Cat A & Cat B Positive	Neutral, Cat A & Cat B Positive	Neutral, Cat A & Cat B Positive	Cat B Positive
<b>THICKNESS</b>	1-3/4"	1-3/4"	1-3/4"	1-3/4"	1-3/4"	1-3/4"	1-3/4"
<b>MAX WIDTH</b>	48"	48"	48"	48"	48"	48"	36" FR & 48" NR
<b>MAX HEIGHT</b>	96" at 20 min 120" at non rated	120" at 20 min 120" at non rated	120" at 20 min 120" at non rated	120" at 45 min 96" at 60 min	96" at 45-60 min 96" at 90 min	96" at 20 min 96" at non rated	96" at 30 min 120" at non rated
<b>RAILS</b>	1-5/16" LSL 5" upon request.	1-5/16" LSL 5" upon request.	1-5/16" LSL N/A	1-1/2" Split Fire 5" upon request	2" Tectonite 5" upon request	1-3/4" LSL 5" upon request	1-5/16" LSL 5" upon request
<b>STILES</b>	1-5/16" LS	1-5/16" LS	1-5/16" LS	1-1/2" Split Fire	1-1/2" Tectonite	1-3/4" Split Fire	1-5/16" LSL
<b>VERTICAL EDGES</b>	Matching edgeband over (after faces)						
<b>CROSSBAND</b>	HDF one piece						
<b>WOOD VENEER</b>	"A" & "AA" grades, Standard or Exotic Species and Cuts per client choice. Engineered Veneers upon request Vertical (standard), Horizontal, Mixed per client choice. Sketch Face upon request UV Cured: Clear, Light, Dark and Custom Stain colors						
<b>LAMINATE</b>	High Pressure Decorative Laminate						
<b>PAINT GRADE</b>	UV Cured: Primed, Paint Skin, Standard and Custom Paint (solid colors) applied on HDF surface UV Cured: Primed, Standard and Custom Paint (solid colors) applied on Paint Grade species veneer						
<b>VISION LITE CUTOUT</b>	N/A	1,296 sq in max area, (36" W or 54" H) for 20min and non rated	2,808 sq in max area, (36" W or 78" H) for 20min and non rated	1,296 sq in max area, (36" W or 54" H) for 45min only	1,232 sq in max area for 45-60min & 100 sq in max area for 90min (36" W or 54" H)	N/A	1,080 sq in max area, (32" W or 54" H) for non rated only
<b>LOUVER CUTOUT</b>	N/A	1,296 sq in max area, (36" W or 54" H) for non rated only.	2,808 sq in max area, (36" W or 78" H) for non rated only	524 sq in max area, (24" W or 24" H) for Fusible Link use only	524 sq in max area, (24" W or 24" H) for Fusible Link use only	N/A	1,080 sq in max area, (32" W or 54" H) for non rated only.

# ARCHITECTURAL FRAMES



MODEL SERIES	ANTI-FIRE COMPOSITE	TECTONITE	FJ PINE	MDF	POPLAR MO	RED OAK MO	SOLID WOOD
<b>FIRE RATING</b>	20 min WHI	20 to 90 min WHI	N/A	N/A	N/A	N/A	30 min CE (Euro)
<b>PRESSURE</b>	Neutral & Cat B Positive	Neutral & Cat B Positive	N/A	N/A	N/A	N/A	Cat B Positive
<b>THICKNESS</b>	1-3/4"	1-3/4"	1-3/8" to 1-3/4"	1-3/8" to 1-3/4"	1-3/8" to 1-3/4"	1-3/8" to 1-3/4"	1-3/4"
<b>MAX WIDTH</b>	48" single 72" pair	48" single 96" pair	48" single 96" pair	48" single 96" pair	48" single 96" pair	48" single 96" pair	36" single 72" pair
<b>MAX HEIGHT</b>	96" at 20 min	96" at 20 to 90 min	120"	96"	120"	120"	96" at 30 min
<b>FACE</b>	Min 3/4"	Min 3/4"	Min 3/4"	Min 3/4"	Min 3/4"	Min 3/4"	Min 1-1/4"
<b>JAMB WIDTH</b>	Min 4-3/4"	Min 4-1/2"	3-1/2"	3-1/2"	3-1/2"	3-1/2"	3-1/4"
<b>TYPES</b>	Single and Double Rabbet & Communicating	Single and Double Rabbet & Communicating	Single and Double Rabbet, Communicating & Case Open	Single and Double Rabbet, Communicating & Case Open	Single and Double Rabbet, Communicating, Case Open & Special Jamb	Single and Double Rabbet, Communicating, Case Open & Special Jamb	Single Rabbet only
<b>WOOD VENEER</b>	*A* & *AA* grades, Standard or Exotic Species and Cuts per client choice Engineered Veneers upon request UV Cured: Clear, Light, Dark and Custom Stain colors				Non Veneered (Just Pre-finish) UV Cured: Clear, Light, Dark and Custom Stain colors.		
<b>LAMINATE</b>	HPDL	HPDL	N/A	HPDL	N/A	N/A	N/A
<b>PAINT GRADE</b>	UV Cured: Primed, Standard and Custom Paint (solid colors)						
<b>CASING</b>	Rectangular, 2" or 3" Width, MDF, same finish as Jamb						
<b>GROOVE</b>	N/A	N/A	At backface side only, 1/4" x 1/4", both sides	At backface side only, 1/4" x 1/4", both sides.	At backface side only, 1/4" x 1/4", both sides	At backface side only, 1/4" x 1/4", both sides	N/A



**“WE ARE PROUD TO HELP  
OUR CLIENTS IN EACH PROJECT”**

# CONTACT

Textil 101, parque Industrial Escobedo  
C.P. 66050, Escobedo, Nuevo León.

Phone: +52 81 81 54 87 01

[ventas@wks.com.mx](mailto:ventas@wks.com.mx)

[www.wks.com.mx](http://www.wks.com.mx)

