

WKS[®]

A close-up photograph of a dark-stained wooden surface, likely a door or panel, showing a prominent vertical wood grain. The wood has a rich, dark brown to black hue with natural variations in tone and texture, including some knots and grain irregularities.

**MULTIPLE SPECIFICATIONS,
MULTIPLE DESIGNS
AND MULTIPLE FINISHES
IN A SINGLE DOOR.**



EXPERIENCE AND QUALITY

WKS is a company with more than 20 years of experience in the door industry, we satisfy the design and engineering needs in the most demanding markets with architectural wood doors and frames, complying with American and European standards and norms.

At WKS we believe that a door is more than just a door, and we are more than just a manufacturer. We believe that the quality of our products and the service that our team offers, guarantees the complete satisfaction of our clients.



**“WE HAVE THE WIDEST RANGE
OF OPTIONS AVAILABLE TO CREATE
A UNIQUE DESIGN”**

FINISHES

Consistent and uniform colors on all your doors

Smooth and soft finishes for a surface free of imperfections

Extra level of protection on veneered doors

Color matching and customization availability

Painting is done in a controlled environment, causing less damage to the environment





VENEERS

We specialize in offering a wide variety of veneer options. You can choose the species, cut, pairing, assembly, grain direction and add reveals to your design.

In general you can create a unique opening that will harmonize the chosen design of the project.

STANDARD VENEERS



MAPLE



OAK



CHERRY



WALNUT

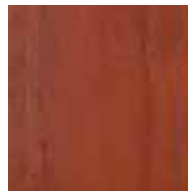
COLOR OF VENEERS



HONEY



OCHRE



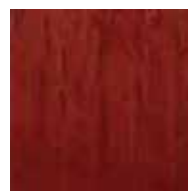
NUTMEG



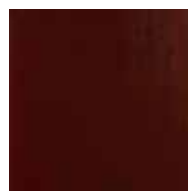
TOBACCO



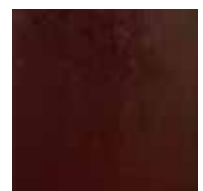
SAFFRON



CHERRY



BOURBON



CHOCOLATE

NATURAL VENEERS



ALDER



BACOTE



MAHOGANY



WHITE CEDAR



RED CEDAR



EBONY



SMOKED OAK



ASH TREE



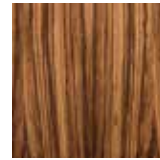
HICKORY



WHITE POPLAR



TZALAM



NATURAL ZEBRANO



SMOKED LARCH



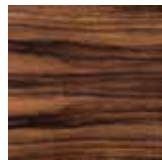
SPRING



HAYA



OKOUME



PAROTA



RED OAK



AFRICAN TZALAM



CEIBA

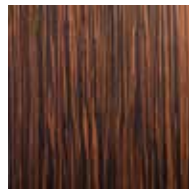


STAINED ASH

PRE-COMPOSED VENEERS



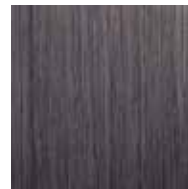
CEDAR



EBONY



OAK



GRATED GRAY



GRAINED GRAY



WALNUT



TEKA PC2



NOGAL PC1

CUT

The beauty of veneer lies in the natural variations in texture, grain, shape, color, and the way it is assembled on the face of a door. The way a log is cut, relative to the annual growth rings, determines the appearance of the veneer. Veneer sheets will have natural variations in grain and pattern that are inherent to the species and cut.



PAIRING

Veneer sheets can be paired creating a variety of styles that can be seen in the design of the door.



BOOK MATCH

The most commonly used combination in the industry is when two pieces of veneer are opened and are like two adjacent pages in an open book. The veneer joints match and create a mirror image pattern at the joint line.

It is recommended Plain Sliced, Quarter Cut, and Rift Cut.



Plain Sliced



Quarter Cut



Rif Cut



SLIP MATCH

Veneer sheets are placed in sequence without turning each piece over. The grain pattern is repeated, but the joints will not have a mirrored effect.

It is recommended to use Quarter Cut and Rift Cut.



Quarter Cut



Rif Cut



RANDOM MATCH

(Mismatched) A face containing veneer sheets of the same species that are selected and assembled regardless of color or grain, resulting in color and grain variations, contrasts, and patterns.

A pleasant appearance is not required.

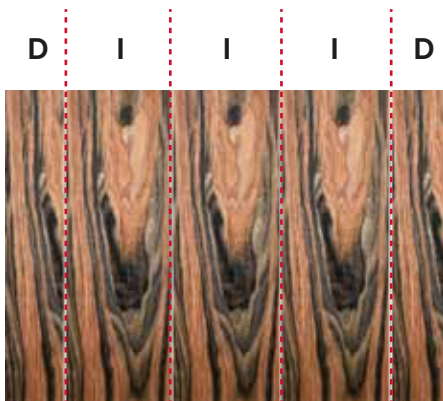


ASSEMBLY

The chosen way of assembling the veneer flitches (strips) on the door helps to achieve patterns that balance the design. The type of assembly must be specified. If no specification is made, Running Match is the default option.

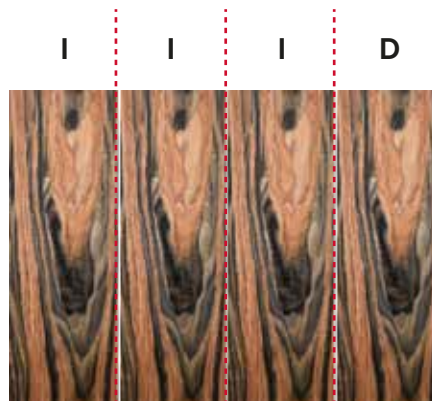


D= DIFFERENT
I= EQUAL



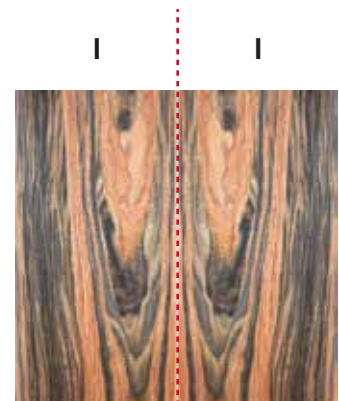
RUNNING MATCH

The inner sheets will be the same width as each other, the outer sheets of the veneer will be of unequal width.



BALANCE MATCH

Each face is assembled from sheets of uniform width before trimming.



CENTER BALANCE MATCH

Each face is assembled from an even number of veneer sheets of uniform width before trimming.

GRAIN DIRECTION

A unique design can be created on the door considering and choosing the direction of the grains, our combinations are: Vertical Grain, Horizontal Grain, Mixed Grain and Sketch Face.



**VERTICAL
GRAIN**



**HORIZONTAL
GRAIN**



MIXED GRAIN

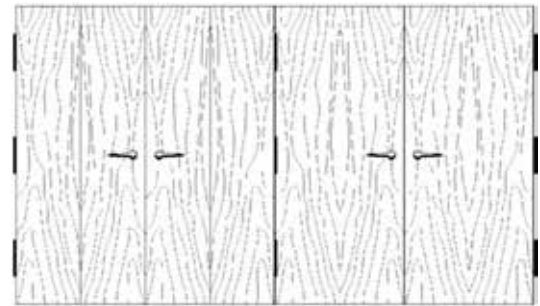
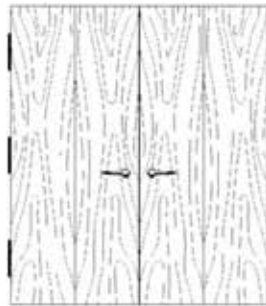


SKETCH FACE



APPEARANCE OF THE DOORS PAIRS OR IN SETS

When a specific transition is desired between doors or door sets within a space, it is important to specify the required sequence.



REVEALS

A reveal is the insertion of a line on the face of the door. Available in thicknesses of 1/8" wide and 1/16" deep.

You can choose in "V" shaped or "straight".

The inside of the line is painted in black or a similar color to match the color of the door.





HPL

We have commercial partners of decorative laminates of the most recognized brands worldwide and leaders in the industry.

We can offer a wide range of colors, textures and designs to help conceptualize any project.





PAINTING

Our UV paint line makes a differentiator in the projects in which we participate.

We have the standard colors in the industry, and if necessary, we can match any desired color.

Advantage

- The use of inks and UV technology helps us have more light stability in our doors, giving the color of the door a longer life cycle.
- The application of these UV products are low in VOC (*Volatile Organic Chemical*), that is, the product is free of gas emissions, the material is completely dry, which is why it falls into the category of LEED Doors.

**“WE DELIVER UNIQUE PRODUCTS
THAT MANAGE TO HIGHLIGHT AND
DIFFERENTIATE YOUR PROJECT”**

CONTACT

Textil 101, parque Industrial Escobedo
C.P. 66050, Escobedo, Nuevo León.

Phone: +81 1812 9005

ventas@wks.com.mx

www.wks.com.mx

